



DUS14 Polyclonal Antibody

Catalog No	YP-Ab-04963
Isotype	IgG
Reactivity	Human;Mouse
Applications	WB;ELISA
Gene Name	DUSP14 MKP6
Protein Name	Dual specificity protein phosphatase 14 (EC 3.1.3.16) (EC 3.1.3.48) (MKP-1-like protein tyrosine phosphatase) (MKP-L) (Mitogen-activated protein kinase phosphatase 6) (MAP kinase phosphatase 6) (MKP-6)
Immunogen	Synthesized peptide derived from human protein . at AA range: 120-200
Specificity	DUS14 Polyclonal Antibody detects endogenous levels of protein.
Formulation	Liquid in PBS containing 50% glycerol, and 0.02% sodium azide.
Source	Polyclonal, Rabbit,IgG
Purification	The antibody was affinity-purified from rabbit antiserum by affinity-chromatography using epitope-specific immunogen.
Dilution	WB 1:500-2000 ELISA 1:5000-20000
Concentration	1 mg/ml
Purity	≥90%
Storage Stability	-20°C/1 year
Synonyms	
Observed Band	21kD
Cell Pathway	
Tissue Specificity	Lung,
Function	catalytic activity:A phosphoprotein + H(2)O = a protein + phosphate.,catalytic activity:Protein tyrosine phosphate + H(2)O = protein tyrosine + phosphate.,function:Involved in the inactivation of MAP kinases. Dephosphorylates ERK, JNK and p38 MAP-kinases.,similarity:Belongs to the protein-tyrosine phosphatase family. Non-receptor class dual specificity subfamily.,similarity:Contains 1 tyrosine-protein phosphatase domain.,subunit:Interacts with CD28.,
Background	dual specificity phosphatase 14(DUSP14) Homo sapiens Dual-specificity phosphatases (DUSPs) constitute a large heterogeneous subgroup of the type I cysteine-based protein-tyrosine phosphatase superfamily. DUSPs are characterized by their ability to dephosphorylate both tyrosine and serine/threonine residues. They have been implicated as major modulators of critical signaling pathways. DUSP14 contains the consensus DUSP C-terminal catalytic domain but lacks the N-terminal CH2 domain found in the MKP



(mitogen-activated protein kinase phosphatase) class of DUSPs (see MIM 600714) (summary by Patterson et al., 2009 [PubMed 19228121]).[supplied by OMIM, Dec 2009],

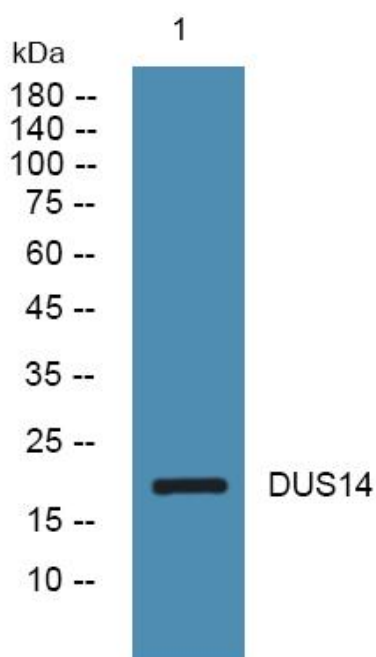
matters needing attention

Avoid repeated freezing and thawing!

Usage suggestions

This product can be used in immunological reaction related experiments. For more information, please consult technical personnel.

Products Images



Western blot analysis of lysates from DU145 cells, primary antibody was diluted at 1:1000, 4° over night